

Embedding success in **your** business



# DATASHEET



## TFT COLOR LCD MODULE NL6448BC26-22F

Date: September 2009

[www.avnet-embedded.eu](http://www.avnet-embedded.eu)

**NEC** NEC LCD Technologies, Ltd.

# **TFT COLOR LCD MODULE**

**NL6448BC26-22F**

**21cm (8.4 Type)  
VGA**

**DATA SHEET**  
DOD-PP-0860 (1st edition)

**This DATA SHEET is updated document from  
PRELIMINARY DATA SHEET DOD-PP-0694(2)**

**All information is subject to change without notice.  
Please confirm the sales representative before  
starting to design your system.**

## INTRODUCTION

The Copyright to this document belongs to NEC LCD Technologies, Ltd. (hereinafter called "NEC"). No part of this document will be used, reproduced or copied without prior written consent of NEC.

NEC does and will not assume any liability for infringement of patents, copyrights or other intellectual property rights of any third party arising out of or in connection with application of the products described herein except for that directly attributable to mechanisms and workmanship thereof. No license, express or implied, is granted under any patent, copyright or other intellectual property right of NEC.

Some electronic parts/components would fail or malfunction at a certain rate. In spite of every effort to enhance reliability of products by NEC, the possibility of failures and malfunction might not be avoided entirely. To prevent the risks of damage to death, human bodily injury or other property arising out thereof or in connection therewith, each customer is required to take sufficient measures in its safety designs and plans including, but not limited to, redundant system, fire-containment and anti-failure.

The products are classified into three quality grades: "**Standard**", "**Special**", and "**Specific**" of the highest grade of a quality assurance program at the choice of a customer. Each quality grade is designed for applications described below. Any customer who intends to use a product for application other than that of Standard quality grade is required to contact an NEC sales representative in advance.

The **Standard** quality grade applies to the products developed, designed and manufactured in accordance with the NEC standard quality assurance program, which are designed for such application as any failure or malfunction of the products (sets) or parts/components incorporated therein a customer uses are, directly or indirectly, free of any damage to death, human bodily injury or other property, like general electronic devices.

Examples: Computers, office automation equipment, communications equipment, test and measurement equipment, audio and visual equipment, home electronic appliances, machine tools, personal electronic equipment, industrial robots, etc.

The **Special** quality grade applies to the products developed, designed and manufactured in accordance with an NEC quality assurance program stricter than the standard one, which are designed for such application as any failure or malfunction of the products (sets) or parts/components incorporated therein a customer uses might directly cause any damage to death, human bodily injury or other property, or such application under more severe condition than that defined in the Standard quality grade without such direct damage.

Examples: Control systems for transportation equipment (automobiles, trains, ships, etc.), traffic control systems, anti-disaster systems, anti-crime systems, medical equipment not specifically designed for life support, safety equipment, etc.

The **Specific** quality grade applies to the products developed, designed and manufactured in accordance with the standards or quality assurance program designated by a customer who requires an extremely higher level of reliability and quality for such products.

Examples: Military systems, aircraft control equipment, aerospace equipment, nuclear reactor control systems, medical equipment/devices/systems for life support, etc.

The quality grade of this product is the "**Standard**" unless otherwise specified in this document.

**CONTENTS**

**INTRODUCTION .....2**

**1. OUTLINE .....4**

    1.1 STRUCTURE AND PRINCIPLE .....4

    1.2 APPLICATION .....4

    1.3 FEATURES .....4

**2. GENERAL SPECIFICATIONS.....5**

**3. BLOCK DIAGRAM .....6**

**4. DETAILED SPECIFICATIONS.....8**

    4.1 MECHANICAL SPECIFICATIONS .....8

    4.2 ABSOLUTE MAXIMUM RATINGS.....8

    4.3 ELECTRICAL CHARACTERISTICS.....9

        4.3.1 LCD panel signal processing board .....9

        4.3.2 Backlight lamp .....10

        4.3.3 Power supply voltage ripple.....10

        4.3.4 Fuse .....10

    4.4 POWER SUPPLY VOLTAGE SEQUENCE .....11

        4.4.1 LCD panel signal processing board .....11

        4.4.2 Backlight lighting circuit .....11

    4.5 CONNECTIONS AND FUNCTIONS FOR INTERFACE PINS .....12

        4.5.1 LCD panel signal processing board .....12

        4.5.2 Backlight lamp .....13

        4.5.3 Positions of plug and socket .....13

    4.6 DISPLAY COLORS AND INPUT DATA SIGNALS .....14

    4.7 DISPLAY POSITIONS .....15

    4.8 SCANNING DIRECTIONS .....15

    4.9 INPUT SIGNAL TIMINGS .....16

        4.9.1 Outline of input signal timings .....16

        4.9.2 Timing characteristics.....17

        4.9.3 Input signal timing chart .....19

    4.10 OPTICS.....22

        4.10.1 Optical characteristics.....22

        4.10.2 Definition of contrast ratio.....23

        4.10.3 Definition of luminance uniformity .....23

        4.10.4 Definition of response times .....23

        4.10.5 Definition of viewing angles.....23

**5. ESTIMATED LUMINANCE LIFETIME.....24**

**6. RELIABILITY TESTS .....25**

**7. PRECAUTIONS .....26**

    7.1 MEANING OF CAUTION SIGNS .....26

    7.2 CAUTIONS .....26

    7.3 ATTENTIONS.....26

        7.3.1 Handling of the product .....26

        7.3.2 Environment.....27

        7.3.3 Characteristics.....27

        7.3.4 Other .....27

**8. OUTLINE DRAWINGS.....28**

    8.1 FRONT VIEW .....28

    8.2 REAR VIEW .....29

## 1. OUTLINE

### 1.1 STRUCTURE AND PRINCIPLE

Color LCD module NL6448BC26-22F is composed of the amorphous silicon thin film transistor liquid crystal display (a-Si TFT LCD) panel structure with driver LSIs for driving the TFT (Thin Film Transistor) array and a backlight.

The a-Si TFT LCD panel structure is injected liquid crystal material into a narrow gap between the TFT array glass substrate and a color-filter glass substrate.

Color (Red, Green, Blue) data signals from a host system (e.g. signal generator, etc.) are modulated into best form for active matrix system by a signal processing board, and sent to the driver LSIs which drive the individual TFT arrays.

The TFT array as an electro-optical switch regulates the amount of transmitted light from the backlight assembly, when it is controlled by data signals. Color images are created by regulating the amount of transmitted light through the TFT array of red, green and blue dots.

### 1.2 APPLICATION

- For industrial use

### 1.3 FEATURES

- High luminance
- High contrast
- Wide viewing angle
- Wide temperature range
- 6-bit digital RGB signals
- Reversible-scan direction
- LED backlight type
- Replaceable lamp holder for backlight
- Acquisition product for UL60950-1/CSA C22.2 No.60950-1-03 (File number: E170632)
- Compliant with the European RoHS directive (2002/95/EC)



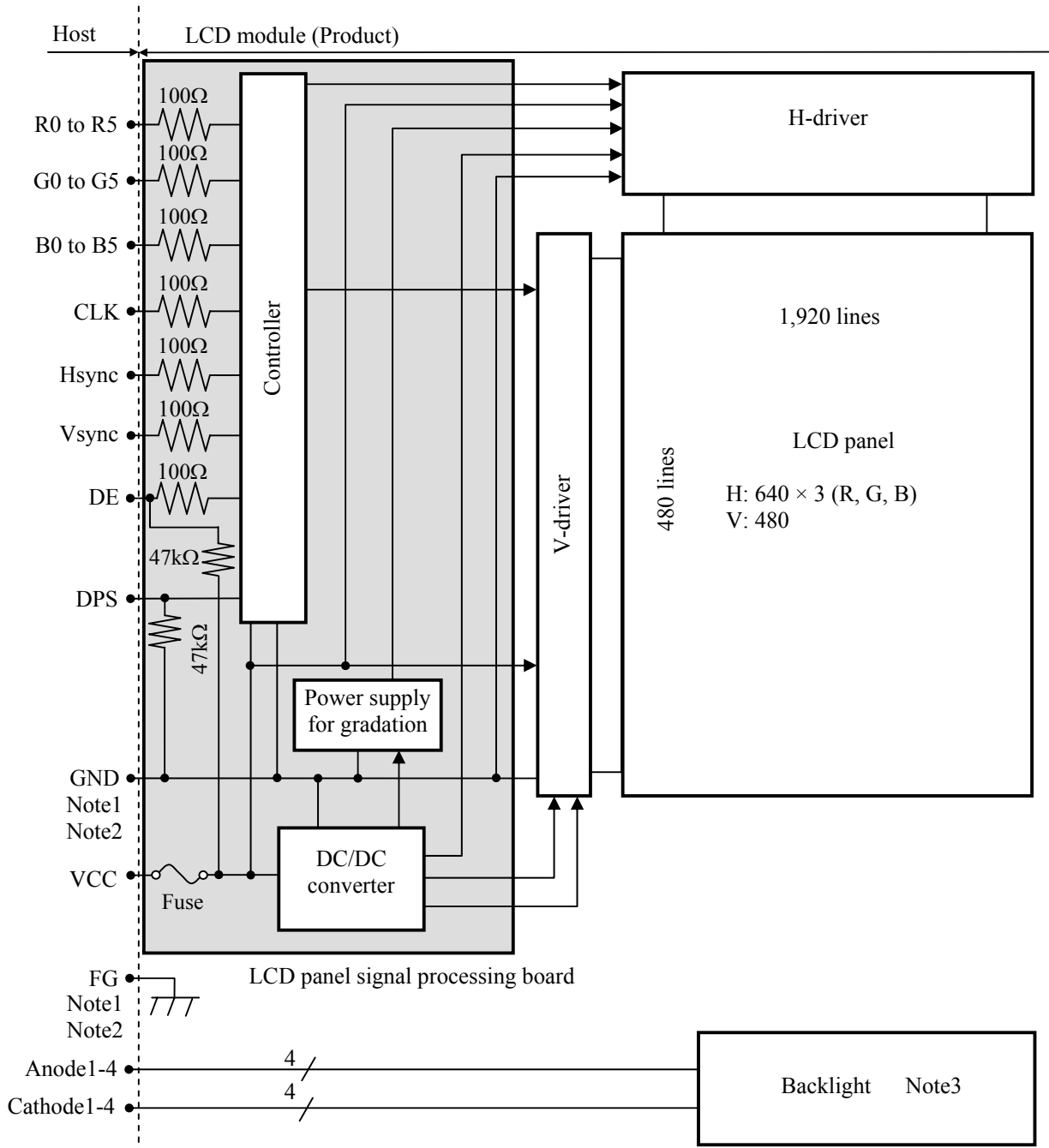
2. GENERAL SPECIFICATIONS

|                                   |  |
|-----------------------------------|--|
| <b>Display area</b>               | 170.88 (H) × 128.16 (V) mm   |
| <b>Diagonal size of display</b>   | 21cm (8.4inches)   |
| <b>Drive system</b>               | a-Si TFT active matrix   |
| <b>Display color</b>              | 262,144 colors   |
| <b>Pixel</b>                      | 640 (H) × 480 (V) pixels   |
| <b>Pixel arrangement</b>          | RGB (Red dot, Green dot, Blue dot) vertical stripe   |
| <b>Dot pitch</b>                  | 0.089 (H) × 0.267 (V) mm   |
| <b>Pixel pitch</b>                | 0.267 (H) × 0.267 (V) mm   |
| <b>Module size</b>                | 200.0 (W) × 152.0 (H) × 10.5 (D) mm (typ.)   |
| <b>Weight</b>                     | 330g (typ.)  |
| <b>Contrast ratio</b>             | 1,000:1 (typ.)   |
| <b>Viewing angle</b>              | At the contrast ratio ≥10:1<br><ul style="list-style-type: none"> <li>• Horizontal: Right side 80° (typ.), Left side 80° (typ.)</li> <li>• Vertical: Up side 80° (typ.), Down side 80° (typ.)</li> </ul>   |
| <b>Designed viewing direction</b> | At DPS= Low or open: Normal scan<br><ul style="list-style-type: none"> <li>• Viewing direction without image reversal: Up side (12 o'clock)</li> <li>• Viewing direction with contrast peak: Down side (6 o'clock)</li> <li>• Viewing angle with optimum grayscale (γ≒2.2): Normal axis (perpendicular)</li> </ul> |
| <b>Polarizer surface</b>          | Clear  |
| <b>Polarizer pencil-hardness</b>  | 3H (min.) [by JIS K5400]   |
| <b>Color gamut</b>                | At LCD panel center<br>40% (typ.) [against NTSC color space]   |
| <b>Response time</b>              | Ton+Toff (10% ←→ 90%)<br>18ms (typ.)   |
| <b>Luminance</b>                  | At IL= 25mA/One circuit<br>800cd/m <sup>2</sup> (typ.)   |
| <b>Signal system</b>              | 6-bit digital signals for data of RGB colors,<br>Dot clock (CLK), Data enable (DE),<br>Horizontal synchronous signal (Hsync),<br>Vertical synchronous signal (Vsync)   |
| <b>Power supply voltage</b>       | LCD panel signal processing board: 3.3V or 5.0V  |
| <b>Backlight</b>                  | LED backlight type:<br><br>( Replaceable part<br>• Lamp holder set: Type No. 84LHS12 )   |
| <b>Power consumption</b>          | At IL= 25mA /One circuit, Checkered flag pattern<br>3.9 W (typ.)   |

☆

☆☆

3. BLOCK DIAGRAM



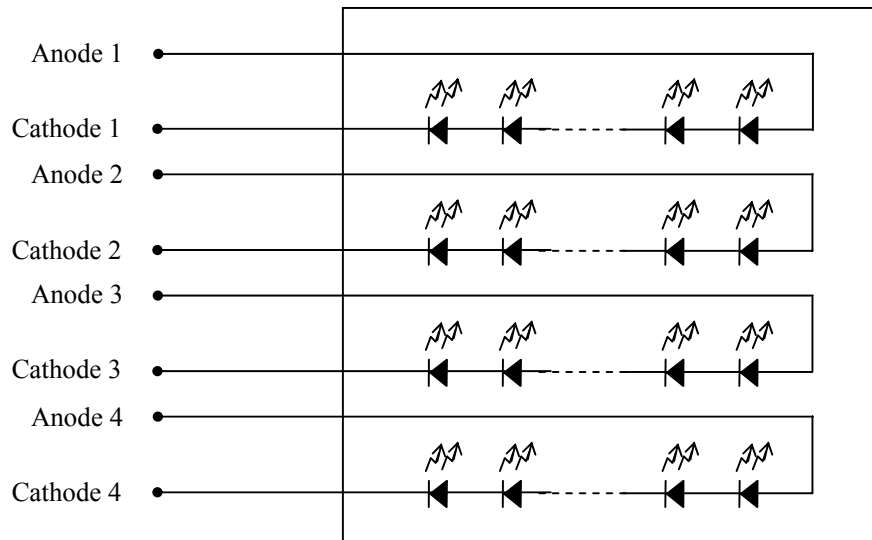
Note1: Relations between GND (Signal ground) and FG (Frame ground) in the LCD module are as follows.

|          |               |
|----------|---------------|
| GND - FG | Not connected |
|----------|---------------|

Note2: GND and FG must be connected to customer equipment's ground, and it is recommended that these grounds are connected together in customer equipment.

Note3: Backlight in detail

Backlight





4. DETAILED SPECIFICATIONS

4.1 MECHANICAL SPECIFICATIONS

| Parameter    | Specification  | Unit |
|--------------|--|------|
| Module size  | 200.0 ± 0.5 (W) × 152.0 ± 0.5 (H) × 10.5 ± 0.5 (D) Note1 | mm   |
| Display area | 170.88 (H) × 128.16 (V) Note1                            | mm   |
| Weight       | 330 (typ.), 350 (max.)                                   | g    |

Note1: See "8. OUTLINE DRAWINGS".

4.2 ABSOLUTE MAXIMUM RATINGS

| Parameter                 |                                   | Symbol     | Rating           | Unit             | Remarks         |
|---------------------------|-----------------------------------|------------|------------------|------------------|-----------------|
| Power supply voltage      | LCD panel signal processing board | VCC        | -0.3 to +6.5     | V                | -               |
| Input voltage for signals | Display signals Note1             | VD         | -0.3 to VCC+0.3  | V                | -               |
|                           | Function signal Note2             | VF         |                  |                  |                 |
| Backlight                 | Forward current                   | IL         | 35               | mA               | per one circuit |
| Storage temperature       |                                   | Tst        | -30 to +80       | °C               | -               |
| Operating temperature     | Front surface                     | TopF       | -20 to +70       | °C               | Note3           |
|                           | Rear surface                      | TopR       | -20 to +70       | °C               | Note4           |
| Relative humidity Note5   | RH                                | ≤ 95       | %                | Ta ≤ 40°C        |                 |
|                           |                                   | ≤ 85       | %                | 40°C < Ta ≤ 50°C |                 |
|                           |                                   | ≤ 55       | %                | 50°C < Ta ≤ 60°C |                 |
|                           |                                   | ≤ 36       | %                | 60°C < Ta ≤ 70°C |                 |
| Absolute humidity Note5   | AH                                | ≤ 70 Note6 | g/m <sup>3</sup> | Ta > 70°C        |                 |

Note1: CLK, Hsync, Vsync, DE, DATA (R0 to R5, G0 to G5, B0 to B5)

Note2: DPS

Note3: Measured at center of LCD panel surface (including self-heat)

Note4: Measured at center of LCD module's rear shield surface (including self-heat)

Note5: No condensation

Note6: Water amount at Ta = 70°C and RH = 36%

4.3 ELECTRICAL CHARACTERISTICS

4.3.1 LCD panel signal processing board

(Ta= 25°C)

| Parameter                               | Symbol | min. | typ.         | max.         | Unit   | Remarks      |
|---|--------|------|--------------|--------------|--------|--------------|
| Power supply voltage                    | VCC    | 3.0  | 3.3          | 3.6          | V      | at VCC= 3.3V |
|   |        | 4.75 | 5.0          | 5.25         | V      | at VCC= 5.0V |
| Power supply current                    | ICC    | -    | 280<br>Note1 | 450<br>Note2 | mA     | at VCC= 3.3V |
|   |        | -    | 180<br>Note1 | 280<br>Note2 | mA     | at VCC= 5.0V |
| Logic input voltage for display signals | High   | VDH  | 0.7VCC       | -            | VCC    | CMOS level   |
|   | Low    | VDL  | 0            | -            | 0.3VCC |              |
| Input voltage for DPS signal            | High   | VFH  | 0.7VCC       | -            | VCC    |              |
|   | Low    | VFL  | 0            | -            | 0.3VCC |              |

Note1: Checkered flag pattern [by EIAJ ED-2522]

Note2: Pattern for maximum current

4.3.2 Backlight lamp

(Ta= 25°C, Note1, Note2)

| Parameter       | Symbol | min. | typ. | max. | Unit | Remarks                   |
|-----------------|--------|------|------|------|------|---------------------------|
| Forward current | IL     | -    | 25   | 27.5 | mA   | Note3                     |
| Forward Voltage | VL     | -    | 29.7 | 34.2 | V    | at IL= 25 mA /One circuit |

☆

Note1: Please drive with constant current .

Note2: The Luminance uniformity may be changed depending on the current variation between 4 circuits.  
It is recommended that the current value difference between each circuit is less than 5%.

Note3: See "4.2 ABSOLUTE MAXIMUM RATINGS".

☆

4.3.3 Power supply voltage ripple

This product works, even if the ripple voltage levels are beyond the permissible values as following the table, but there might be noise on the display image.

| Power supply voltage |      | Ripple voltage<br>(Measure at input terminal of power supply) | Unit  |
|----------------------|------|---|-------|
| VCC                  | 3.3V | ≤ 100   | mVp-p |
|                      | 5.0V | ≤ 100   | mVp-p |

Note1: The permissible ripple voltage includes spike noise.

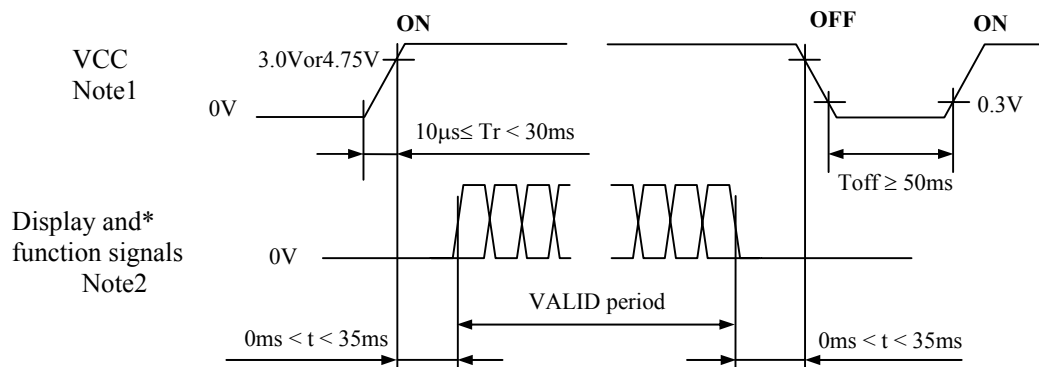
4.3.4 Fuse

| Parameter | Fuse       |                              | Rating | Fusing current | Remarks |
|-----------|------------|------------------------------|--------|----------------|---------|
|           | Type       | Supplier                     |        |                |         |
| VCC       | FCC16202AB | KAMAYA ELECTRIC<br>CO., LTD. | 2.0A   | 4.0A           | Note1   |
|           |            |                              | 32V    |                |         |

Note1: The power supply capacity should be more than the fusing current. If it is less than the fusing current, the fuse may not blow in a short time, and then nasty smell, smoke and so on may occur.

4.4 POWER SUPPLY VOLTAGE SEQUENCE

4.4.1 LCD panel signal processing board

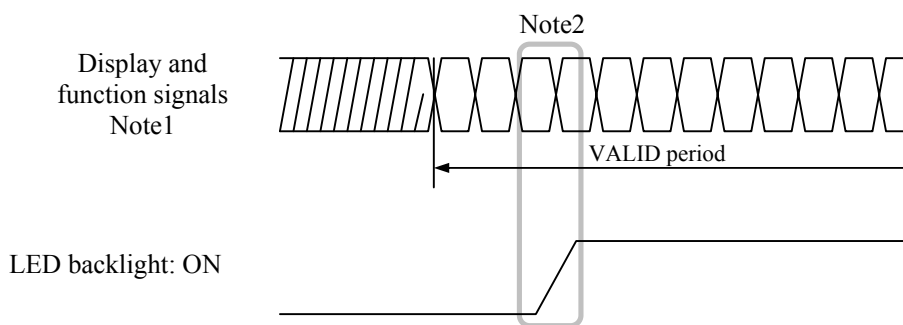


Note1: In terms of voltage variation (voltage drop) while VCC rising edge is below 3.0V in "VCC = 3.3V" or 4.75V in "VCC = 5.0V", a protection circuit may work, and then this product may not work.

Note2: Display signals (CLK, Hsync, Vsync, DE, DATA (R0 to R5, G0 to G5, B0 to B5)) and function signal (DPS) must be Low or High-impedance, exclude the VALID period (See above sequence diagram), in order to avoid that internal circuits is damaged.

If some of display and function signals of this product are cut while this product is working, even if the signal input to it once again, it might not work normally. VCC should be cut when the display and function signals are stopped.

4.4.2 Backlight lighting circuit



Note1: These are the display and function signals for LCD panel signal processing board.

Note2: The backlight should be turned on within the valid period of display and function signals, in order to avoid unstable data display.

4.5 CONNECTIONS AND FUNCTIONS FOR INTERFACE PINS

4.5.1 LCD panel signal processing board

CN1 socket (LCD module side): DF9C-31P-1V (2\*) (Hirose Electric Co., Ltd. (HRS))

Adaptable plug: DF9-31S-1V (2\*), DF9-31S-1V (3\*) (Hirose Electric Co., Ltd. (HRS))

| Pin No. | Symbol | Signal                        | Remarks   |
|---------|--------|-------------------------------|---|
| 1       | GND    | Ground                        | Note1   |
| 2       | CLK    | Dot clock                     | -   |
| 3       | Hsync  | Horizontal synchronous signal |   |
| 4       | Vsync  | Vertical synchronous signal   |   |
| 5       | GND    | Ground                        | Note1   |
| 6       | R0     | Red data (LSB)                | Least significant bit                                   |
| 7       | R1     | Red data                      | -   |
| 8       | R2     | Red data                      |   |
| 9       | R3     | Red data                      |   |
| 10      | R4     | Red data                      |   |
| 11      | R5     | Red data (MSB)                | Most significant bit                                    |
| 12      | GND    | Ground                        | Note1   |
| 13      | G0     | Green data (LSB)              | Least significant bit                                   |
| 14      | G1     | Green data                    | -   |
| 15      | G2     | Green data                    |   |
| 16      | G3     | Green data                    |   |
| 17      | G4     | Green data                    |   |
| 18      | G5     | Green data (MSB)              | Most significant bit                                    |
| 19      | GND    | Ground                        | Note1   |
| 20      | B0     | Blue data (LSB)               | Least significant bit                                   |
| 21      | B1     | Blue data                     | -   |
| 22      | B2     | Blue data                     |   |
| 23      | B3     | Blue data                     |   |
| 24      | B4     | Blue data                     |   |
| 25      | B5     | Blue data (MSB)               | Most significant bit                                    |
| 26      | GND    | Ground                        | Note1   |
| 27      | DE     | Selection of DE / Fixed mode  | High or Open: Fixed mode<br>Data enable signal: DE mode |
| 28      | VCC    | Power supply                  | Note1   |
| 29      | VCC    | Power supply                  |   |
| 30      | N.C.   | -                             | Keep this pin Open.                                     |
| 31      | DPS    | Selection of scan direction   | High: Reverse scan<br>Low or Open: Normal scan<br>Note2 |

Note1: All GND and VCC terminals should be used without any non-connected lines.

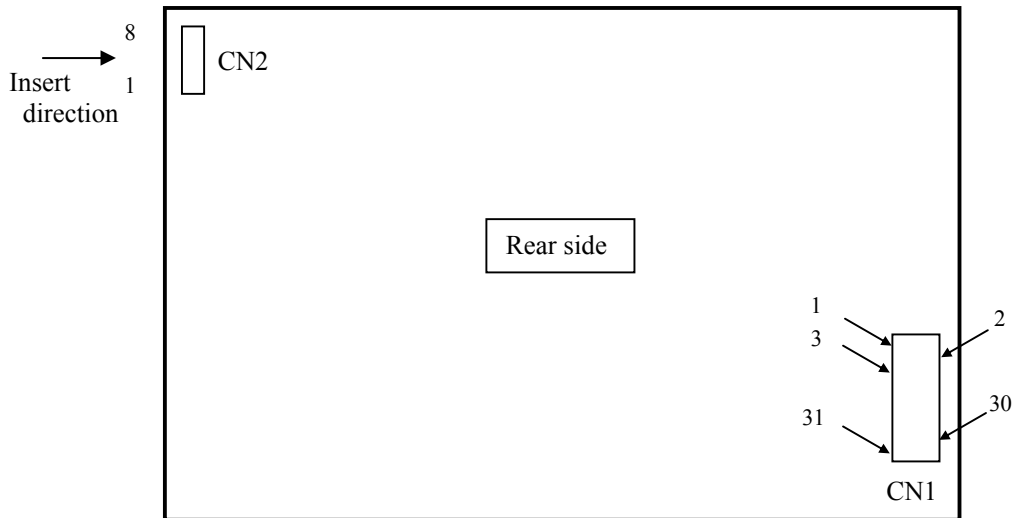
Note2: See "4.8 SCANNING DIRECTIONS".

4.5.2 Backlight lamp

CN2 plug (LCD module side): SM08B-SRSS-TB (J.S.T. Mfg. Co., Ltd.)  
 Adaptable socket: SHR-08V-S (J.S.T. Mfg. Co., Ltd.)

| Pin No. | Symbol | Signal   | Remarks |
|---------|--------|----------|---------|
| 1       | A1     | Anode1   | -       |
| 2       | K1     | Cathode1 | -       |
| 3       | A2     | Anode2   | -       |
| 4       | K2     | Cathode2 | -       |
| 5       | A3     | Anode3   | -       |
| 6       | K3     | Cathode3 | -       |
| 7       | A4     | Anode4   | -       |
| 8       | K4     | Cathode4 | -       |

4.5.3 Positions of plug and socket



4.6 DISPLAY COLORS AND INPUT DATA SIGNALS

This product can display in equivalent to 262,144 colors in 64 gray scales. Also the relation between display colors and input data signals is as the following table.

| Display colors   |         | Data signal (0: Low level, 1: High level) |    |    |    |    |    |    |    |    |    |    |    |    |    |    |    |    |    |
|------------------|---------|---|----|----|----|----|----|----|----|----|----|----|----|----|----|----|----|----|----|
|                  |         | R5  | R4 | R3 | R2 | R1 | R0 | G5 | G4 | G3 | G2 | G1 | G0 | B5 | B4 | B3 | B2 | B1 | B0 |
| Basic colors     | Black   | 0   | 0  | 0  | 0  | 0  | 0  | 0  | 0  | 0  | 0  | 0  | 0  | 0  | 0  | 0  | 0  | 0  | 0  |
|                  | Blue    | 0   | 0  | 0  | 0  | 0  | 0  | 0  | 0  | 0  | 0  | 0  | 0  | 1  | 1  | 1  | 1  | 1  | 1  |
|                  | Red     | 1   | 1  | 1  | 1  | 1  | 1  | 0  | 0  | 0  | 0  | 0  | 0  | 0  | 0  | 0  | 0  | 0  | 0  |
|                  | Magenta | 1   | 1  | 1  | 1  | 1  | 1  | 0  | 0  | 0  | 0  | 0  | 0  | 1  | 1  | 1  | 1  | 1  | 1  |
|                  | Green   | 0   | 0  | 0  | 0  | 0  | 0  | 1  | 1  | 1  | 1  | 1  | 1  | 0  | 0  | 0  | 0  | 0  | 0  |
|                  | Cyan    | 0   | 0  | 0  | 0  | 0  | 0  | 1  | 1  | 1  | 1  | 1  | 1  | 1  | 1  | 1  | 1  | 1  | 1  |
|                  | Yellow  | 1   | 1  | 1  | 1  | 1  | 1  | 1  | 1  | 1  | 1  | 1  | 1  | 0  | 0  | 0  | 0  | 0  | 0  |
|                  | White   | 1   | 1  | 1  | 1  | 1  | 1  | 1  | 1  | 1  | 1  | 1  | 1  | 1  | 1  | 1  | 1  | 1  | 1  |
| Red gray scale   | Black   | 0   | 0  | 0  | 0  | 0  | 0  | 0  | 0  | 0  | 0  | 0  | 0  | 0  | 0  | 0  | 0  | 0  | 0  |
|                  |         | 0   | 0  | 0  | 0  | 0  | 1  | 0  | 0  | 0  | 0  | 0  | 0  | 0  | 0  | 0  | 0  | 0  | 0  |
|                  | dark    | 0   | 0  | 0  | 0  | 1  | 0  | 0  | 0  | 0  | 0  | 0  | 0  | 0  | 0  | 0  | 0  | 0  | 0  |
|                  | ↑       |   |    |    | ⋮  |    |    |    |    |    |    |    |    |    |    |    |    |    |    |
|                  | ↓       |   |    |    | ⋮  |    |    |    |    |    |    |    |    |    |    |    |    |    |    |
| bright           | 1       | 1   | 1  | 1  | 0  | 1  | 0  | 0  | 0  | 0  | 0  | 0  | 0  | 0  | 0  | 0  | 0  | 0  |    |
|                  | 1       | 1   | 1  | 1  | 1  | 0  | 0  | 0  | 0  | 0  | 0  | 0  | 0  | 0  | 0  | 0  | 0  | 0  |    |
| Red              | 1       | 1   | 1  | 1  | 1  | 1  | 0  | 0  | 0  | 0  | 0  | 0  | 0  | 0  | 0  | 0  | 0  | 0  |    |
| Green gray scale | Black   | 0   | 0  | 0  | 0  | 0  | 0  | 0  | 0  | 0  | 0  | 0  | 0  | 0  | 0  | 0  | 0  | 0  | 0  |
|                  |         | 0   | 0  | 0  | 0  | 0  | 0  | 0  | 0  | 0  | 0  | 0  | 1  | 0  | 0  | 0  | 0  | 0  | 0  |
|                  | dark    | 0   | 0  | 0  | 0  | 0  | 0  | 0  | 0  | 0  | 0  | 1  | 0  | 0  | 0  | 0  | 0  | 0  | 0  |
|                  | ↑       |   |    |    | ⋮  |    |    |    |    |    |    |    |    |    |    |    |    |    |    |
|                  | ↓       |   |    |    | ⋮  |    |    |    |    |    |    |    |    |    |    |    |    |    |    |
| bright           | 0       | 0   | 0  | 0  | 0  | 0  | 1  | 1  | 1  | 1  | 0  | 1  | 0  | 0  | 0  | 0  | 0  | 0  |    |
|                  | 0       | 0   | 0  | 0  | 0  | 0  | 1  | 1  | 1  | 1  | 1  | 0  | 0  | 0  | 0  | 0  | 0  | 0  |    |
| Green            | 0       | 0   | 0  | 0  | 0  | 0  | 1  | 1  | 1  | 1  | 1  | 1  | 0  | 0  | 0  | 0  | 0  | 0  |    |
| Blue gray scale  | Black   | 0   | 0  | 0  | 0  | 0  | 0  | 0  | 0  | 0  | 0  | 0  | 0  | 0  | 0  | 0  | 0  | 0  | 0  |
|                  |         | 0   | 0  | 0  | 0  | 0  | 0  | 0  | 0  | 0  | 0  | 0  | 0  | 0  | 0  | 0  | 0  | 0  | 1  |
|                  | dark    | 0   | 0  | 0  | 0  | 0  | 0  | 0  | 0  | 0  | 0  | 0  | 0  | 0  | 0  | 0  | 0  | 1  | 0  |
|                  | ↑       |   |    |    | ⋮  |    |    |    |    |    |    |    |    |    |    |    |    |    |    |
|                  | ↓       |   |    |    | ⋮  |    |    |    |    |    |    |    |    |    |    |    |    |    |    |
| bright           | 0       | 0   | 0  | 0  | 0  | 0  | 0  | 0  | 0  | 0  | 0  | 0  | 1  | 1  | 1  | 1  | 0  | 1  |    |
|                  | 0       | 0   | 0  | 0  | 0  | 0  | 0  | 0  | 0  | 0  | 0  | 0  | 1  | 1  | 1  | 1  | 1  | 0  |    |
| Blue             | 0       | 0   | 0  | 0  | 0  | 0  | 0  | 0  | 0  | 0  | 0  | 0  | 1  | 1  | 1  | 1  | 1  | 1  |    |

4.7 DISPLAY POSITIONS

The following table is the coordinates per pixel (See figure of "4.8 SCANNING DIRECTIONS").

|            |            |     |            |     |             |             |
|------------|------------|-----|------------|-----|-------------|-------------|
| C(0, 0)    |            |     |            |     |             |             |
| R          | G          | B   |            |     |             |             |
| C( 0, 0)   | C( 1, 0)   | ... | C( X, 0)   | ... | C(638, 0)   | C(639, 0)   |
| C( 0, 1)   | C( 1, 1)   | ... | C( X, 1)   | ... | C(638, 1)   | C(639, 1)   |
| ⋮          | ⋮          | ⋮   | ⋮          | ⋮   | ⋮           | ⋮           |
| C( 0, Y)   | C( 1, Y)   | ... | C( X, Y)   | ... | C(638, Y)   | C(639, Y)   |
| ⋮          | ⋮          | ⋮   | ⋮          | ⋮   | ⋮           | ⋮           |
| C( 0, 478) | C( 1, 478) | ... | C( X, 478) | ... | C(638, 478) | C(639, 478) |
| C( 0, 479) | C( 1, 479) | ... | C( X, 479) | ... | C(638, 479) | C(639, 479) |

4.8 SCANNING DIRECTIONS

The following figures are seen from a front view. Also the arrow shows the direction of scan.

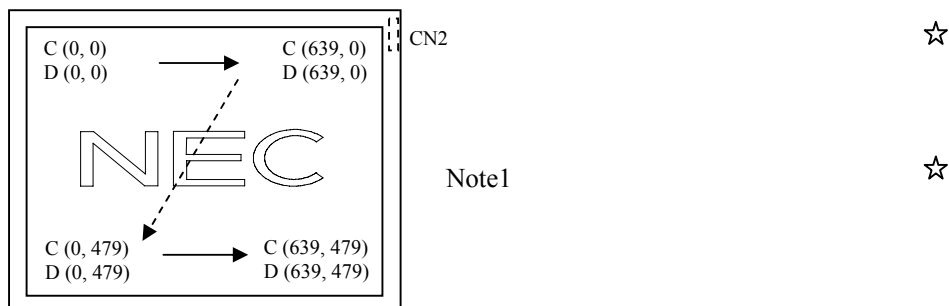


Figure1. DPS= Low or Open (Normal scan)

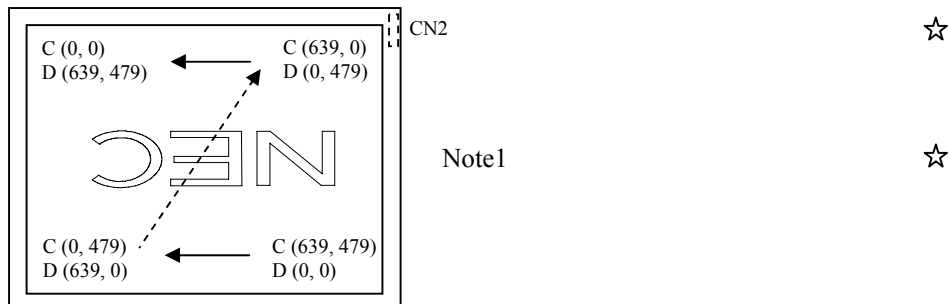


Figure2. DPS= High (Reverse scan)

Note1: Meaning of C (X, Y) and D (X, Y)

C (X, Y): The coordinates of the display position (See "4.7 DISPLAY POSITIONS".)

D (X, Y): The data number of input signal for LCD panel signal processing board

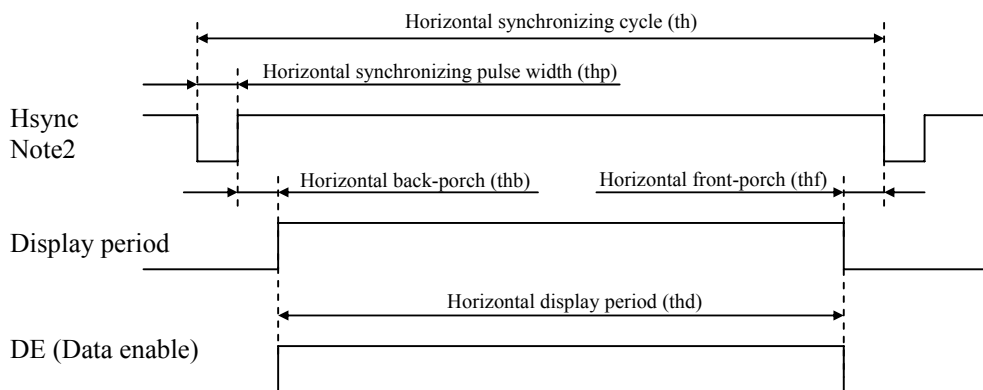


4.9 INPUT SIGNAL TIMINGS

4.9.1 Outline of input signal timings

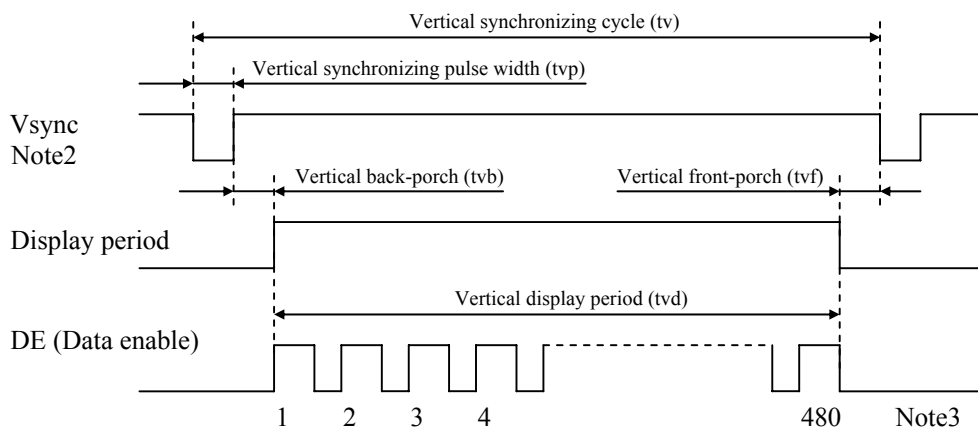
• Horizontal signal

Note1



• Vertical signal

Note1



Note1: This diagram indicates virtual signal for set up to timing.

Note2: Fixed mode cannot be used while working of DE mode.

Note3: See "4.9.3 Input signal timing chart" for numeration of pulse.

4.9.2 Timing characteristics

(a) Fixed mode

(Note1, Note3)



| Parameter                             |                                     | Symbol     | min. | typ.   | max. | Unit | Remarks          |       |   |
|---------------------------------------|-------------------------------------|------------|------|--------|------|------|------------------|-------|---|
| CLK                                   | Frequency                           | 1/tc       | 21.0 | 25.175 | 29.0 | MHz  | 39.72ns (typ.)   |       |   |
|                                       | Duty                                | tcd        | 0.4  | 0.5    | 0.6  | -    | -                |       |   |
|                                       | Rise time, Fall time                | terf       | -    | -      | 10   | ns   |                  |       |   |
| DATA<br>(R0-R5)<br>(G0-G5)<br>(B0-B5) | CLK-DATA                            | Setup time | tds  | 3      | -    | -    | ns               | -     |   |
|                                       |                                     | Hold time  | tdh  | 5      | -    | -    | ns               |       |   |
|                                       | Rise time, Fall time                | tdrf       | -    | -      | 10   | ns   |                  |       |   |
| Hsync                                 | Cycle                               | th         | 30.0 | 31.778 | 33.6 | μs   | 31.468kHz (typ.) |       |   |
|                                       |                                     |            | 800  |        |      | CLK  | -                |       |   |
|                                       | Display period                      | thd        | 640  |        |      | CLK  |                  |       |   |
|                                       | Front-porch                         | thf        | 16   |        |      | CLK  |                  |       |   |
|                                       | Pulse width                         | thp        | 10   | 96     | -    | CLK  |                  |       |   |
|                                       | Back-porch                          | thb        | -    | 48     | 134  | CLK  |                  |       |   |
|                                       | Total of pulse width and back-porch | thp + thb  | 144  |        |      | CLK  |                  | Note2 |   |
|                                       | CLK- Hsync                          | Setup time | ths  | 3      | -    | -    |                  | ns    | - |
|                                       |                                     | Hold time  | thh  | 5      | -    | -    |                  | ns    |   |
| Rise time, Fall time                  | thrf                                | -          | -    | 10     | ns   |      |                  |       |   |
| Vsync                                 | Cycle                               | tv         | 16.1 | 16.683 | 17.2 | ms   | 59.94Hz (typ.)   |       |   |
|                                       |                                     |            | 525  |        |      | H    | -                |       |   |
|                                       | Display period                      | tvd        | 480  |        |      | H    |                  |       |   |
|                                       | Front-porch                         | tvf        | 12   |        |      | H    |                  |       |   |
|                                       | Pulse width                         | tvp        | 1    | 2      | -    | H    |                  |       |   |
|                                       | Back-porch                          | tvb        | -    | 31     | 32   | H    |                  |       |   |
|                                       | Total of pulse width and back-porch | tvp + tvb  | 33   |        |      | H    |                  | Note2 |   |
|                                       | Hsync - Vsync                       | Setup time | tvhs | 3      | -    | -    |                  | ns    | - |
|                                       |                                     | Hold time  | tvhh | 5      | -    | -    |                  | ns    |   |
| Rise time, Fall time                  | tvrf                                | -          | -    | 10     | ns   |      |                  |       |   |

Note1: Definition of parameters is as follows.

$$tc = 1CLK, tcd = tch/tc, th = 1H$$

Note2: Keep tvp + tvb and thp + thb within the table. If it is out of specification, display position will be shifted to right/left side or up/down.

Note3: Vertical cycle (tv) should be equal to the integral multiple of Horizontal cycle (th).



(b) DE mode

(Note1, Note2, Note3)

| Parameter                             |                         | Symbol               | min.  | typ.   | max.   | Unit | Remarks        |                  |
|---------------------------------------|-------------------------|----------------------|-------|--------|--------|------|----------------|------------------|
| CLK                                   | Frequency               | 1/tc                 | 21.0  | 25.175 | 29.0   | MHz  | 39.72ns (typ.) |                  |
|                                       | Duty                    | tcd                  | 0.4   | 0.5    | 0.6    | -    | -              |                  |
|                                       | Rise time, Fall time    | tcrf                 | -     | -      | 10     | ns   |                |                  |
| DATA<br>(R0-R5)<br>(G0-G5)<br>(B0-B5) | CLK-DATA                | Setup time           | tds   | 3      | -      | -    | ns             | -                |
|                                       |                         | Hold time            | tdh   | 5      | -      | -    | ns             |                  |
|                                       | Rise time, Fall time    | tdrf                 | -     | -      | 10     | ns   |                |                  |
| DE                                    | Horizontal              | Cycle                | th    | 30.0   | 31.778 | 33.6 | μs             | 31.468kHz (typ.) |
|                                       |                         |                      |       | -      | 800    | -    | CLK            | -                |
|                                       |                         | Display period       | thd   | 640    |        |      | CLK            |                  |
|                                       | Vertical<br>(One frame) | Cycle                | tv    | 16.1   | 16.683 | 17.2 | ms             | 59.94Hz (typ.)   |
|                                       |                         |                      |       | -      | 525    | -    | H              | -                |
|                                       |                         | Display period       | tvd   | 480    |        |      | H              |                  |
|                                       | CLK-DE                  | Setup time           | tdes  | 3      | -      | -    | ns             | -                |
|                                       |                         | Hold time            | tdeh  | 5      | -      | -    | ns             |                  |
|                                       |                         | Rise time, Fall time | tderf | -      | -      | 10   | ns             |                  |

Note1: Definition of parameters is as follows.

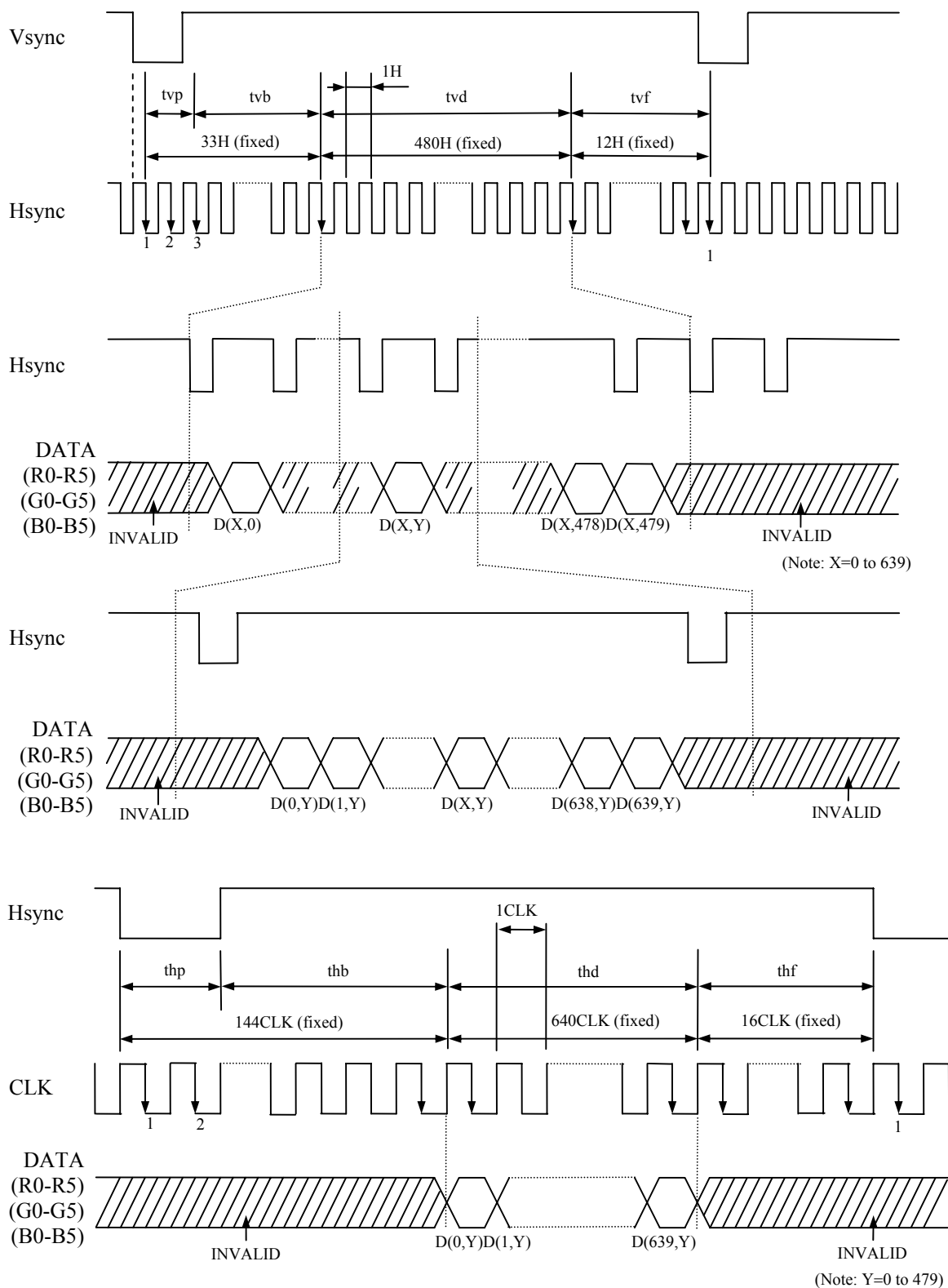
tc= 1CLK, tcd= tch/tc, th= 1H

Note2: Hsync signal (CN1-Pin No.3) and Vsync signal (CN1-Pin No.4) are not used inside the product at DE mode, but do not keep these pins open to avoid noise problem.

Note3: Vertical cycle (tv) should be equal to the integral multiple of Horizontal cycle (th).

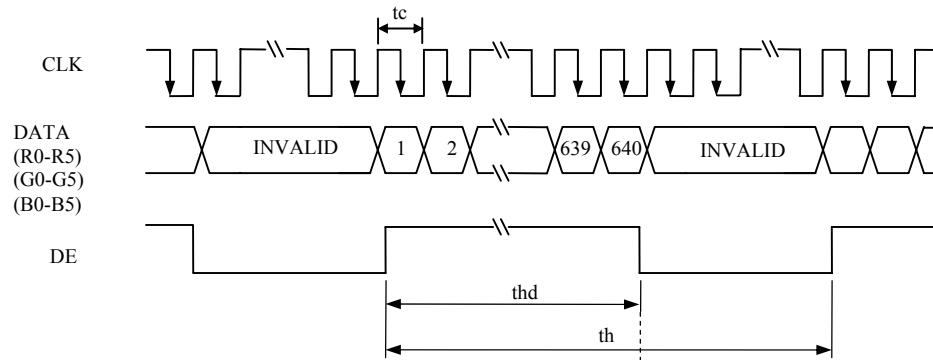
4.9.3 Input signal timing chart

(a) Fixed mode

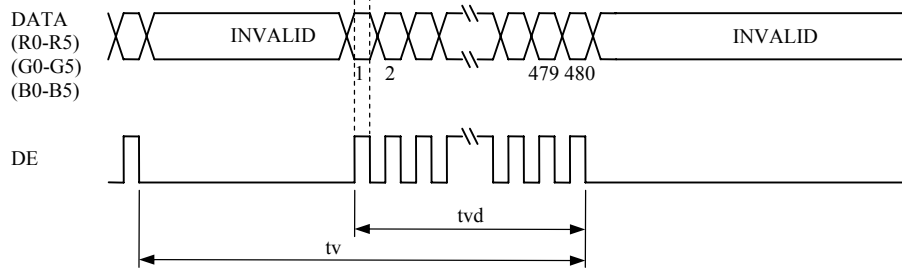


(b) DE mode

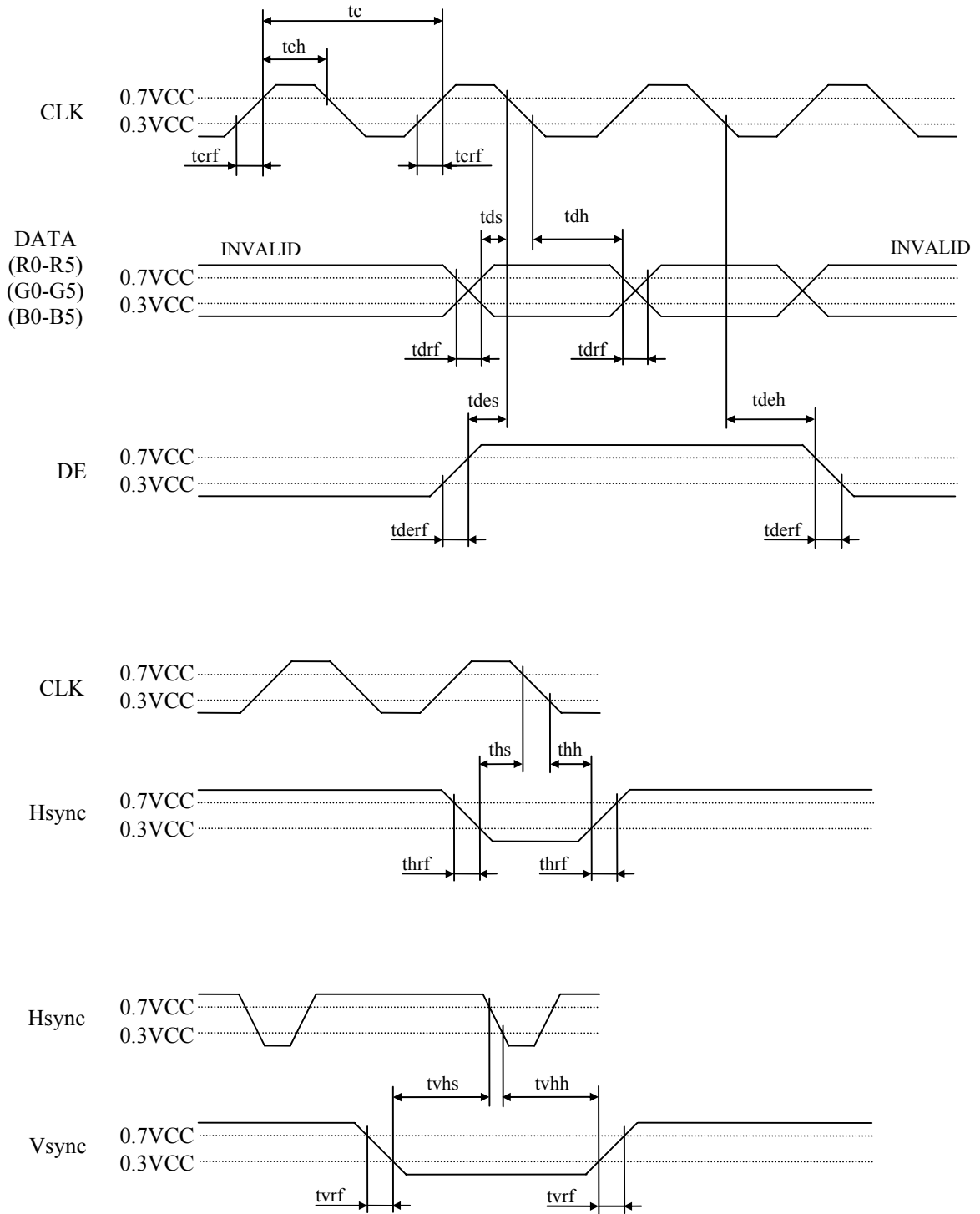
Horizontal timing



Vertical timing



(c) Common item of Fixed mode and DE mode



4.10 OPTICS

4.10.1 Optical characteristics

(Note1, Note2)

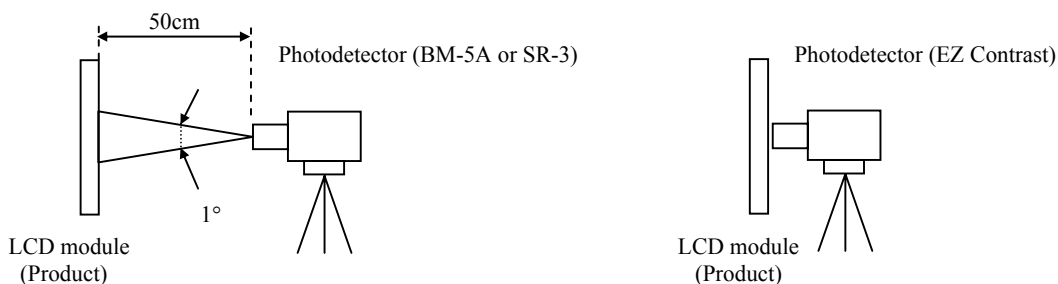
| Parameter            | Condition   | Symbol   | min.       | typ.  | max.  | Unit              | Measuring instrument | Remarks |       |
|----------------------|---|--|------------|-------|-------|-------------------|----------------------|---------|-------|
| Luminance            | White at center<br>$\theta R=0^\circ, \theta L=0^\circ, \theta U=0^\circ, \theta D=0^\circ$                     | L  | 450        | 800   | -     | cd/m <sup>2</sup> | BM-5A                | -       |       |
| Contrast ratio       | White/Black at center<br>$\theta R=0^\circ, \theta L=0^\circ, \theta U=0^\circ, \theta D=0^\circ$               | CR   | 600        | 1,000 | -     | -                 | BM-5A                | Note3   |       |
| Luminance uniformity | White<br>$\theta R=0^\circ, \theta L=0^\circ, \theta U=0^\circ, \theta D=0^\circ$                               | LU   | -          | 1.25  | 1.4   | -                 | BM-5A                | Note4   |       |
| Chromaticity         | White   | x coordinate                                     | Wx         | 0.263 | 0.313 | 0.363             | -                    | SR-3    | Note5 |
|                      |   | y coordinate                                     | Wy         | 0.279 | 0.329 | 0.379             | -                    |         |       |
|                      | Red   | x coordinate                                     | Rx         | -     | 0.583 | -                 | -                    |         |       |
|                      |   | y coordinate                                     | Ry         | -     | 0.360 | -                 | -                    |         |       |
|                      | Green   | x coordinate                                     | Gx         | -     | 0.348 | -                 | -                    |         |       |
|                      |   | y coordinate                                     | Gy         | -     | 0.547 | -                 | -                    |         |       |
| Blue                 | x coordinate  | Bx   | -          | 0.153 | -     | -                 |                      |         |       |
|                      | y coordinate  | By   | -          | 0.158 | -     | -                 |                      |         |       |
| Color gamut          | $\theta R=0^\circ, \theta L=0^\circ, \theta U=0^\circ, \theta D=0^\circ$<br>at center, against NTSC color space | C  | 35         | 40    | -     | %                 |                      |         |       |
| Response time        | White to Black  | Ton  | -          | 3     | 5     | ms                | BM-5A                | Note6   |       |
|                      | Black to White  | Toff   | -          | 15    | 21    | ms                |                      | Note7   |       |
| Viewing angle        | Right   | $\theta U=0^\circ, \theta D=0^\circ, CR \geq 10$ | $\theta R$ | 70    | 80    | -                 | EZ Contrast          | Note8   |       |
|                      | Left  | $\theta U=0^\circ, \theta D=0^\circ, CR \geq 10$ | $\theta L$ | 70    | 80    | -                 |                      |         |       |
|                      | Up  | $\theta R=0^\circ, \theta L=0^\circ, CR \geq 10$ | $\theta U$ | 70    | 80    | -                 |                      |         |       |
|                      | Down  | $\theta R=0^\circ, \theta L=0^\circ, CR \geq 10$ | $\theta D$ | 70    | 80    | -                 |                      |         |       |

Note1: These are initial characteristics.

Note2: Measurement conditions are as follows.

Ta= 25°C, VCC= 3.3V, IL= 25mA/One circuit, Display mode: VGA, Horizontal cycle= 1/31.468kHz, Vertical cycle= 1/59.94Hz, DPS= Low or Open: Normal scan ☆

Optical characteristics are measured at luminance saturation after 20minutes from working the product, in the dark room. Also measurement methods are as follows.



Note3: See "4.10.2 Definition of contrast ratio".

Note4: See "4.10.3 Definition of luminance uniformity".

Note5: These coordinates are found on CIE 1931 chromaticity diagram.

Note6: Product surface temperature: TopF= 28.5°C

Note7: See "4.10.4 Definition of response times".

Note8: See "4.10.5 Definition of viewing angles".

4.10.2 Definition of contrast ratio

The contrast ratio is calculated by using the following formula.

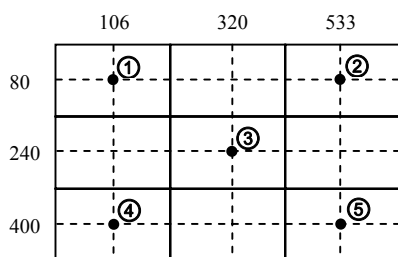
$$\text{Contrast ratio (CR)} = \frac{\text{Luminance of white screen}}{\text{Luminance of black screen}}$$

4.10.3 Definition of luminance uniformity

The luminance uniformity is calculated by using following formula.

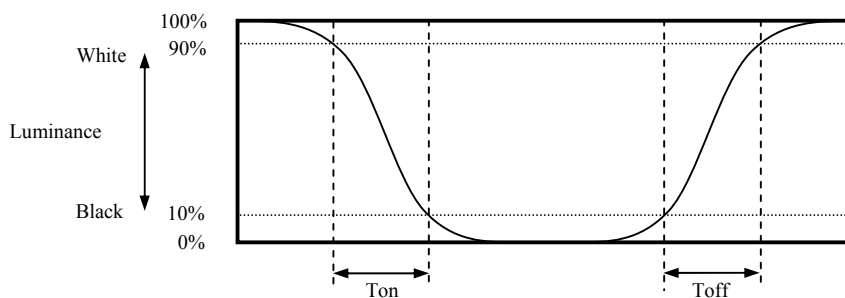
$$\text{Luminance uniformity (LU)} = \frac{\text{Maximum luminance from ① to ⑤}}{\text{Minimum luminance from ① to ⑤}}$$

The luminance is measured at near the 5 points shown below.

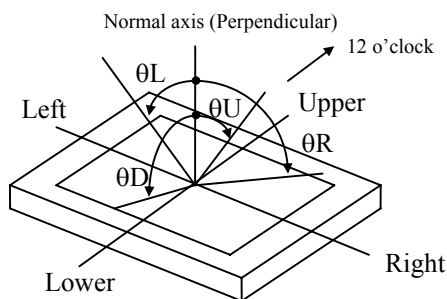


4.10.4 Definition of response times

Response time is measured, the luminance changes from "white" to "black", or "black" to "white" on the same screen point, by photo-detector. Ton is the time it takes the luminance change from 90% down to 10%. Also Toff is the time it takes the luminance change from 10% up to 90% (See the following diagram.).



4.10.5 Definition of viewing angles





**5. ESTIMATED LUMINANCE LIFETIME**

The luminance lifetime is the time from initial luminance to half-luminance.

**This lifetime is the estimated value, and is not guarantee value.**

| Condition                |   | Estimated luminance lifetime<br>(Life time expectancy)<br>Note1, Note2, Note3 | Unit |
|--------------------------|---|---|------|
| LED elementary substance | 25°C (Ambient temperature of LED)<br>Continuous operation, IL= 25mA / One circuit | 50,000  | h    |

☆  
☆  
☆

Note1: Life time expectancy is mean time to half-luminance.

Note2: Estimated luminance lifetime is not the value for LCD module but the value for LED elementary substance.

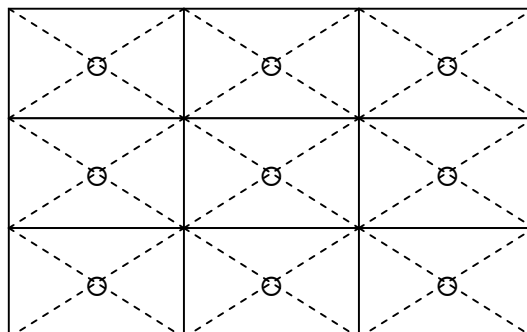
Note3: By ambient temperature, the lifetime changes particularly. Especially, in case the product works under high temperature environment, the lifetime becomes short.

6. RELIABILITY TESTS

| Test item                                    | Condition   | Judgment                                       | Note1 |
|--|---|--|-------|
| High temperature and humidity<br>(Operation) | ① 60 ± 2°C, RH= 90%, 240hours<br>② Display data is black.   | No display malfunctions                        |       |
| High temperature<br>(Operation)              | ① 70 ± 3°C, 240hours<br>② Display data is black.  |  |       |
| Heat cycle<br>(Operation)                    | ① -20 ± 3°C...1hour<br>70 ± 3°C...1hour<br>② 50cycles, 4 hours/cycle<br>③ Display data is black.                                  |  |       |
| Thermal shock<br>(Non operation)             | ① -30 ± 3°C...30minutes<br>80 ± 3°C...30minutes<br>② 100cycles, 1hour/cycle<br>③ Temperature transition time is within 5 minutes. |  |       |
| ESD<br>(Operation)                           | ① 150pF, 150Ω, ±10kV<br>② 9 places on a panel surface Note2<br>③ 10 times each places at 1 sec interval                           |  |       |
| Dust<br>(Operation)                          | ① Sample dust: No. 15 (by JIS-Z8901)<br>② 15 seconds stir<br>③ 8 times repeat at 1 hour interval                                  |  |       |
| Vibration<br>(Non operation)                 | ① 5 to 100Hz, 19.6m/s <sup>2</sup><br>② 1 minute/cycle<br>③ X, Y, Z directions<br>④ 120 times each directions                     | No display malfunctions<br>No physical damages |       |
| Mechanical shock<br>(Non operation)          | ① 539m/ s <sup>2</sup> , 11ms<br>② ±X, ±Y, ±Z directions<br>③ 5 times each directions   |  |       |

Note1: Display and appearance are checked under environmental conditions equivalent to the inspection conditions of defect criteria.


Note2: See the following figure for discharge points.




7. PRECAUTIONS


7.1 MEANING OF CAUTION SIGNS

The following caution signs have very important meaning. **Be sure to read "7.2 CAUTIONS" and "7.3 ATTENTIONS", after understanding these contents!**

|   |  |
|---|--|
|  | This sign has the meaning that customer will be injured by personnel or the product will sustain a damage, if customer has wrong operations. |
|---|--|

|   |   |
|---|---|
|  | This sign has the meaning that customer will be injured by personnel, if customer has wrong operations. |
|---|---|

7.2 CAUTIONS

|   |   |
|---|---|
|  | <p><b>* Do not shock and press the LCD panel and the backlight! There is a danger of breaking, because they are made of glass. (Shock: To be not greater 539m/s<sup>2</sup> and to be not greater 11ms, Pressure: To be not greater 19.6 N (φ16mm jig))</b></p> |
|---|---|

7.3 ATTENTIONS 

7.3.1 Handling of the product

- ① Take hold of both ends without touching the circuit board when the product (LCD module) is picked up from inner packing box to avoid broken down or misadjustment, because of stress to mounting parts on the circuit board.
- ② When the product is put on the table temporarily, display surface must be placed downward.
- ③ When handling the product, take the measures of electrostatic discharge with such as earth band, ionic shower and so on, because the product may be damaged by electrostatic.
- ④ The torque for product mounting screws must never exceed 0.294N·m. Higher torque might result in distortion of the bezel.
- ⑤ The product must be installed using mounting holes without undue stress such as bends or twist (See outline drawings). And do not add undue stress to any portion (such as bezel flat area). Bends or twist described above and undue stress to any portion may cause display mura.
- ⑥ Do not press or rub on the sensitive product surface. When cleaning the product surface, wipe it with a soft dry cloth.
- ⑦ Do not push nor pull the interface connectors while the product is working.
- ⑧ When handling the product, use of an original protection sheet on the product surface (polarizer) is recommended for protection of product surface. Adhesive type protection sheet may change color or characteristics of the polarizer.
- ⑨ Usually liquid crystals don't leak through the breakage of glasses because of the surface tension of thin layer and the construction of LCD panel. But, if you contact with liquid crystal for the worst, please wash it out with soap.

7.3.2 Environment

- ① Do not operate or store in high temperature, high humidity, dewdrop atmosphere or corrosive gases. Keep the product in packing box with antistatic pouch in room temperature to avoid dusts and sunlight, when storing the product.
- ② In order to prevent dew condensation occurring by temperature difference, the product packing box should be opened after enough time being left under the environment of an unpacking room. Evaluate the leaving time sufficiently because a situation of dew condensation occurring is changed by the environmental temperature and humidity. (Recommended leaving time: 6 hours or more with packing state)
- ③ Do not operate in high magnetic field. Circuit boards may be broken down by it.
- ④ This product is not designed as radiation hardened.

7.3.3 Characteristics

**The following items are neither defects nor failures.**

- ① Characteristics of the LCD (such as response time, luminance, color uniformity and so on) may be changed depending on ambient temperature. If the product is stored under condition of low temperature for a long time, it may cause display mura. In this case, the product should be operated after enough time being left under condition of operating temperature.
- ② Display mura, flicker, vertical seam or small spot may be observed depending on display patterns.
- ③ Do not display the fixed pattern for a long time because it may cause image sticking. Use a screen saver, if the fixed pattern is displayed on the screen.
- ④ The display color may be changed depending on viewing angle because of the use of condenser sheet in the backlight.
- ⑤ Optical characteristics may be changed depending on input signal timings.

7.3.4 Other

- ① All GND and VCC terminals should be used without any non-connected lines.
- ② Do not disassemble a product or adjust variable resistors.
- ③ See "REPLACEMENT MANUAL FOR LAMP HOLDER SET", when replacing lamp holder set.
- ④ Pack the product with original shipping package, in order to avoid any damages during transportation, when returning the product to NEC for repair and so on.
- ⑤ The information of China RoHS directive six hazardous substances or elements in this product is as follows.



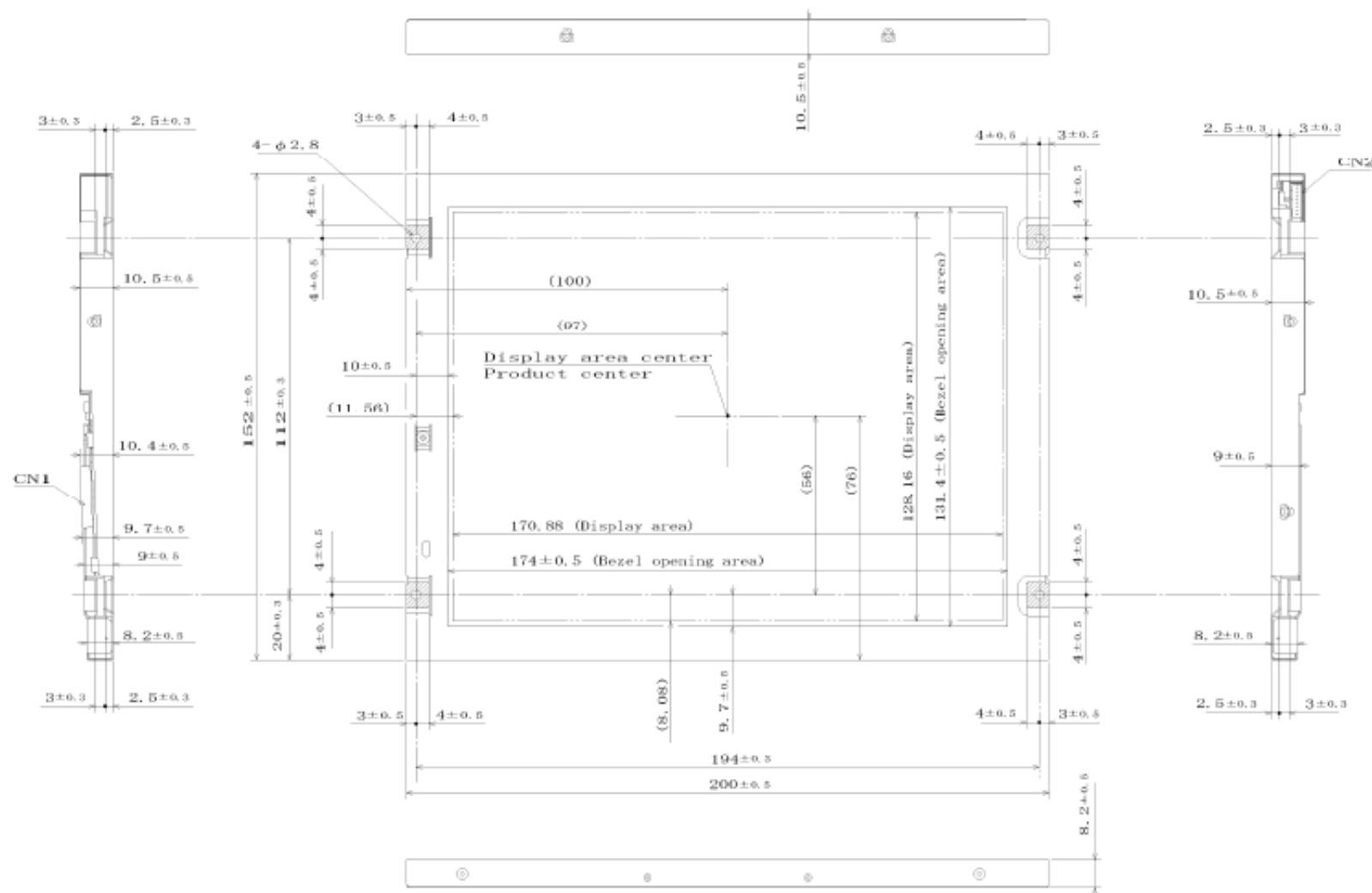
| China RoHS directive six hazardous substances or elements |              |              |                             |                                |                                       |
|---|--------------|--------------|-----------------------------|--------------------------------|---------------------------------------|
| Lead (Pb)   | Mercury (Hg) | Cadmium (Cd) | Hexavalent Chromium (Cr VI) | Polybrominated Biphenyls (PBB) | Polybrominated Biphenyl Ethers (PBDE) |
| ×   | ○            | ○            | ○                           | ○                              | ○                                     |

Notel: ○: This indicates that the poisonous or harmful material in all the homogeneous materials for this part is equal or below the limitation level of SJ/T11363-2006 standard regulation.

×: This indicates that the poisonous or harmful material in all the homogeneous materials for this part is above the limitation level of SJ/T11363-2006 standard regulation.

8. OUTLINE DRAWINGS

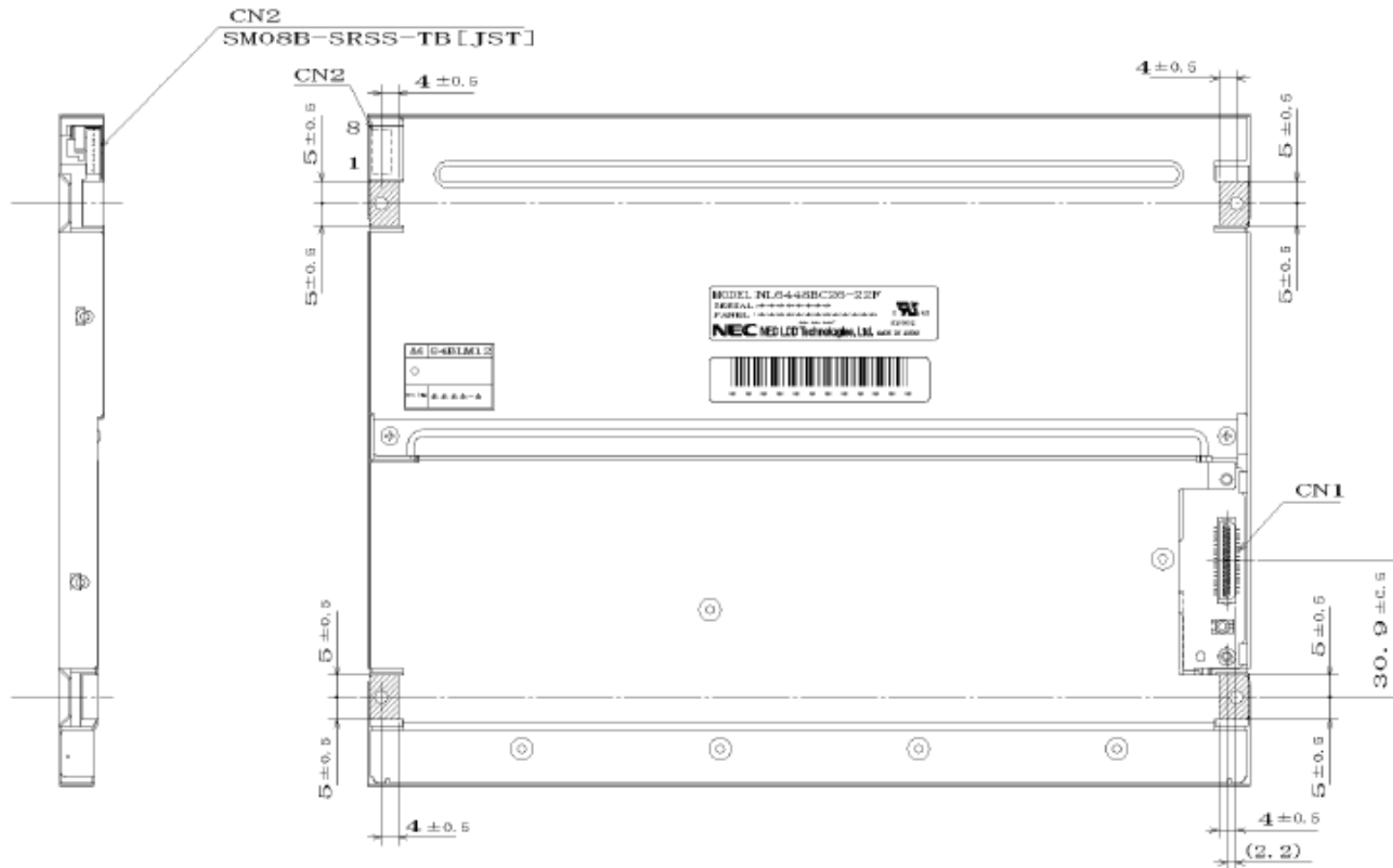
8.1 FRONT VIEW



- Note1: The values in parentheses are for reference.  
 Note2: The torque for product mounting screws must never exceed 0.294N·m.  
 Note3: Mounting hole portions (4 pieces)

Unit: mm

8.2 REAR VIEW



- Note1: The values in parentheses are for reference.
- Note2: The torque for product mounting screws must never exceed 0.294N·m.
- Note3: Mounting hole portions (4 pieces)

Unit: mm

## AVNET EMBEDDED OFFICES

### DENMARK

Avnet Embedded  
Avnet Nortec A/S  
Ellekær 9  
2730 Herlev  
Phone: +45 3678 6250  
Fax: +45 3678 6255  
denmark@avnet-embedded.eu

### FINLAND

Avnet Embedded  
Avnet Nortec Oy  
Pihatörmä 1 B  
02240 Espoo  
Phone: +358 20 749 9 260  
Fax: +358 20 749 9 280  
finland@avnet-embedded.eu

### FRANCE

Avnet Embedded  
Avnet EMG France SA  
Parc Club du Moulin à Vent, Bât 10  
33, rue du Dr Georges Lévy  
69693 Vénissieux Cedex  
Phone: +33 4 78 77 13 92  
Fax: +33 4 78 77 13 97  
bron@avnet-embedded.eu

Avnet Embedded  
Avnet EMG France SA  
14 avenue Carnot  
91349 Massy Cedex  
Phone: +33 1 64 47 29 29  
Fax: +33 1 64 47 99 99  
paris@avnet-embedded.eu

Avnet Embedded  
Avnet EMG France SA  
Les Peupliers II  
35 avenue des Peupliers  
35510 Cesson-Sévigné  
Phone: + 33 2 99 77 37 02  
Fax: + 33 2 99 77 37 01  
rennes@avnet-embedded.eu

### GERMANY (AUSTRIA, CZECH REPUBLIC, HUNGARY, POLAND, SWITZERLAND)

Avnet Embedded  
Avnet EMG GmbH  
Gruber Straße 60c  
85586 Poing  
Phone: +49 8121 775 500  
Fax: +49 8121 775 550  
poing@avnet-embedded.eu

Avnet Embedded  
Avnet EMG GmbH  
Lötscher Weg 66  
41334 Nettetal  
Phone: +49 8121 775 500  
Fax: +49 8121 775 550  
nettetal@avnet-embedded.eu

### ITALY (PORTUGAL, SPAIN)

Avnet Embedded  
Avnet EMG Italy SRL  
Via Manzoni, 44  
20095 Cusano Milanino  
Phone: +39 02 660 92 1  
Fax: +39 02 660 92 498  
milano@avnet-embedded.eu

### NETHERLANDS (BELGIUM, LUXEMBOURG)

Avnet Embedded  
Avnet B.V.  
Takkebijsters 2  
4817 BL Breda  
Phone: +31 76 5722400  
Fax: +31 76 5722404  
benelux@avnet-embedded.eu

### SWEDEN (NORWAY)

Avnet Embedded  
Avnet Nortec AB  
Esplanaden 3 D  
172 67 Sundbyberg  
Phone: +46 8 564 725 50  
Fax: +46 8 760 01 10  
sweden@avnet-embedded.eu

### UNITED KINGDOM (IRELAND)

Avnet Embedded  
5a Waltham Park  
White Waltham  
Maidenhead  
Berkshire, SL6 3TN  
Phone: +44 1628 518900  
Fax: +44 1628 518901  
uk@avnet-embedded.eu

All trademarks and logos are the property of their respective owners. No guarantee as to the accuracy, completeness or reliability of any information. Subject to modifications and amendments.